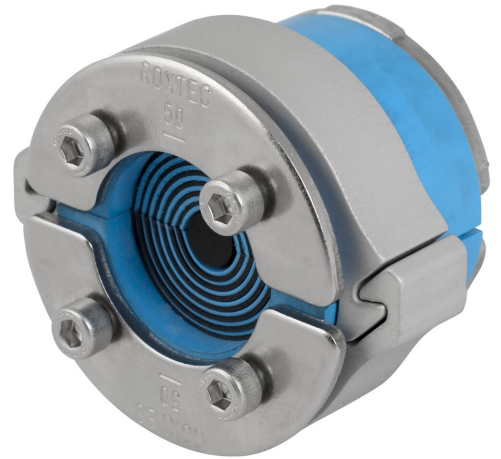




# Solution d'étanchéité Roxtec C RS SLO

Solution d'étanchéité circulaire pour optimiser l'espace et le poids.

La solution d'étanchéité Roxtec C RS SLO est légère mais très solide pour les entrées de câbles et de tuyauteries uniques dans les armoires, les coffrets et les équipements. Offrant une protection contre les infiltrations et le feu, ainsi qu'un maintien des câbles résistant aux vibrations, elle est idéal pour les secteurs de la mobilité tels que le matériel roulant. La solution consiste en une bague Roxtec C RS adaptable et une douille Roxtec C SLO. Elle est disponible en quatre tailles différentes pour couvrir des câbles et des tuyaux allant de 4 à 54 mm.



- Léger
- Surface optimisée
- Accepte des câbles pré-connectés
- Ouvrable

## Caractéristiques du produit



Coupe-feu



IP/UL NEMA

## Structure d'installation



Armoires et coffrets

## Classements et certificats

### Feu

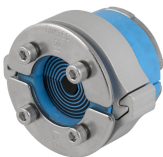
- Classement E/EI selon EN 45545 E30

### Étanchéité

- IP 66

## Éléments d'étanchéité

### Éléments d'étanchéité



Solution d'étanchéité C RS SLO

Pour plus d'informations, veuillez consulter [roxtec.com](https://www.roxtec.com).



## Kits de passage préconfigurés

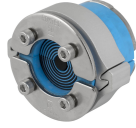
mm/kg



C RS SLO 43 ALU



C RS SLO 50 ALU



C RS SLO 68 ALU



C RS SLO 75 ALU

Titre	Configuration	Dimensions d'ouverture Ø	Poids	N° art.
C RS SLO 43 ALU	1x (4.0-23.0)	44 - 46	0.25	234690
C RS SLO 50 ALU	1x (8.0-30.0)	51 - 53	0.29	234691
C RS SLO 68 ALU	1x (26.0-48.0)	69 - 71	0.43	234692
C RS SLO 75 ALU	1x (24.0-54.0)	76 - 78	0.5	234694

The product information provided by Roxtec does not release the purchaser of the Roxtec system, or part thereof, from the obligation to independently determine the suitability of the products for the intended process, installation and/or use.

Roxtec gives no guarantee for the Roxtec system or any part thereof and assumes no liability for any loss or damage whatsoever, whether direct, indirect, consequential, loss of profit or otherwise, occurred or caused by the Roxtec systems or installations containing components not manufactured by an authorized manufacturer and/or occurred or caused by the use of the Roxtec system in a manner or for an application other than for which the Roxtec system was designed or intended.

Roxtec expressly excludes any implied warranties of merchantability and fitness for a particular purpose and all other express or implied representations and warranties provided by statute or common law. User determines suitability of the Roxtec system for intended use and assumes all risk and liability in connection therewith. In no event shall Roxtec be liable for indirect, consequential, punitive, special, exemplary or incidental damages or losses.

The Roxtec products are offered and sold in accordance with the conditions of the Roxtec General Terms of Sales. The latest version of the Roxtec General Terms of Sales can be downloaded from <https://www.roxtec.com/en/about-us/about-roxtec/general-terms-of-sales/>

We reserve the right to make changes to the product and technical information without further notice. Any errors in print or entry are no claims for indemnity. The content of this publication is the property of Roxtec International AB and is protected by copyright.

This document was generated on: 2024-09-27